



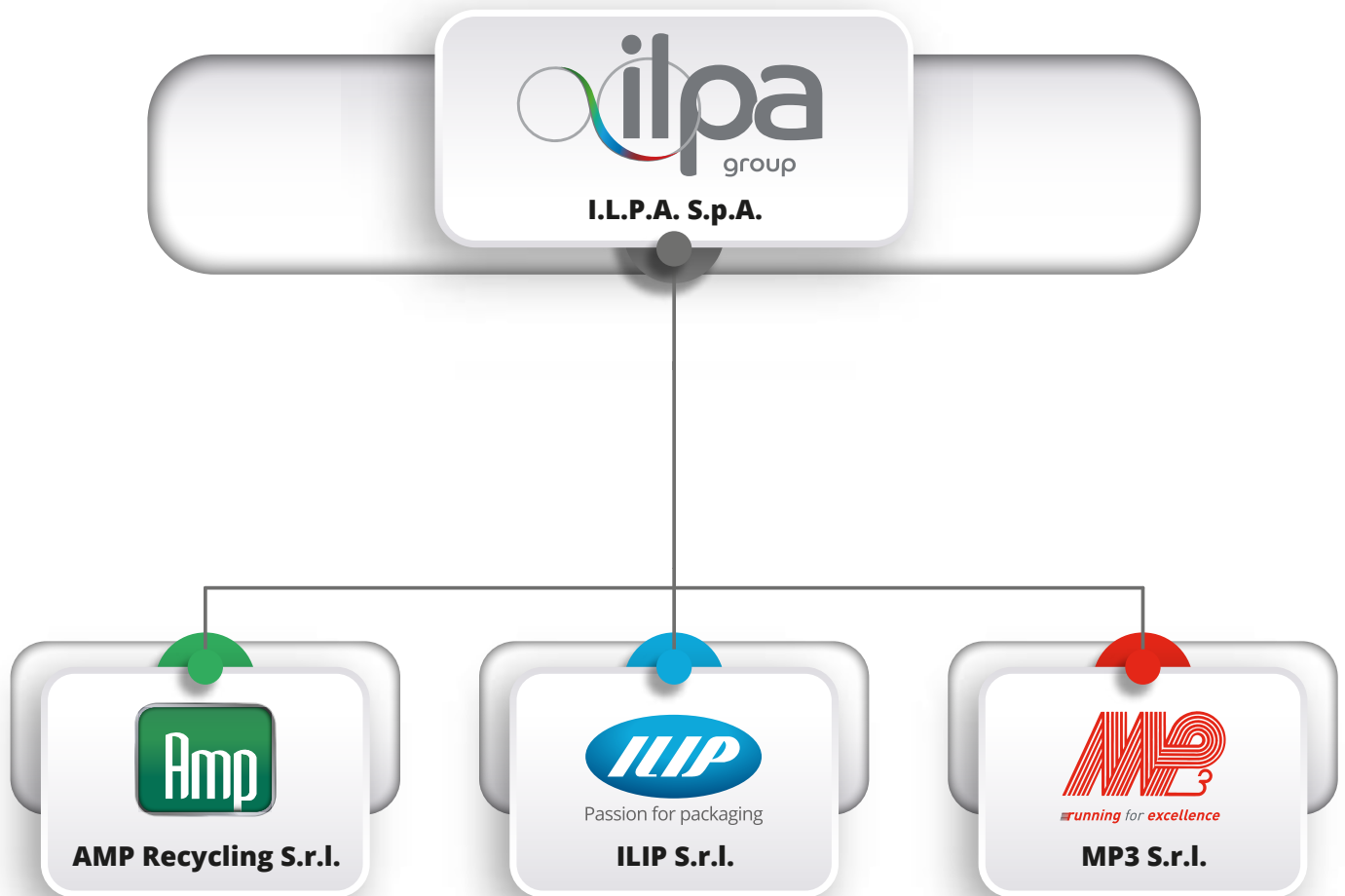
AMP Recycling

# ***Company Profile***

a business of  **ilpa**  
group

# I.L.P.A. Group

## THE STRUCTURE



### BUSINESS AREAS:

- Foodservice Packaging
- Fresh Produce Packaging
- Fresh Food Packaging
- Horticultural Packaging

### BUSINESS AREAS:

- Intermediate products
- Thermoformable and FF&S reels
- Cut Sheets

# I.L.P.A. Group

## AT A GLANCE

Established	1962
Production plants I.L.P.A. 3	2 x Bologna (ILIP; MP3) 1 x Ferrara (AMP)
Markets served	Retail chains, food processing industries, foodservice companies, caterers, horticultural packaging, automotive industry, plastic converters
Export	58 Countries (5 CONTINENTS)
B2B Customers	approx. 4.000

# AMP Recycling

## *BUSINESS AREA*



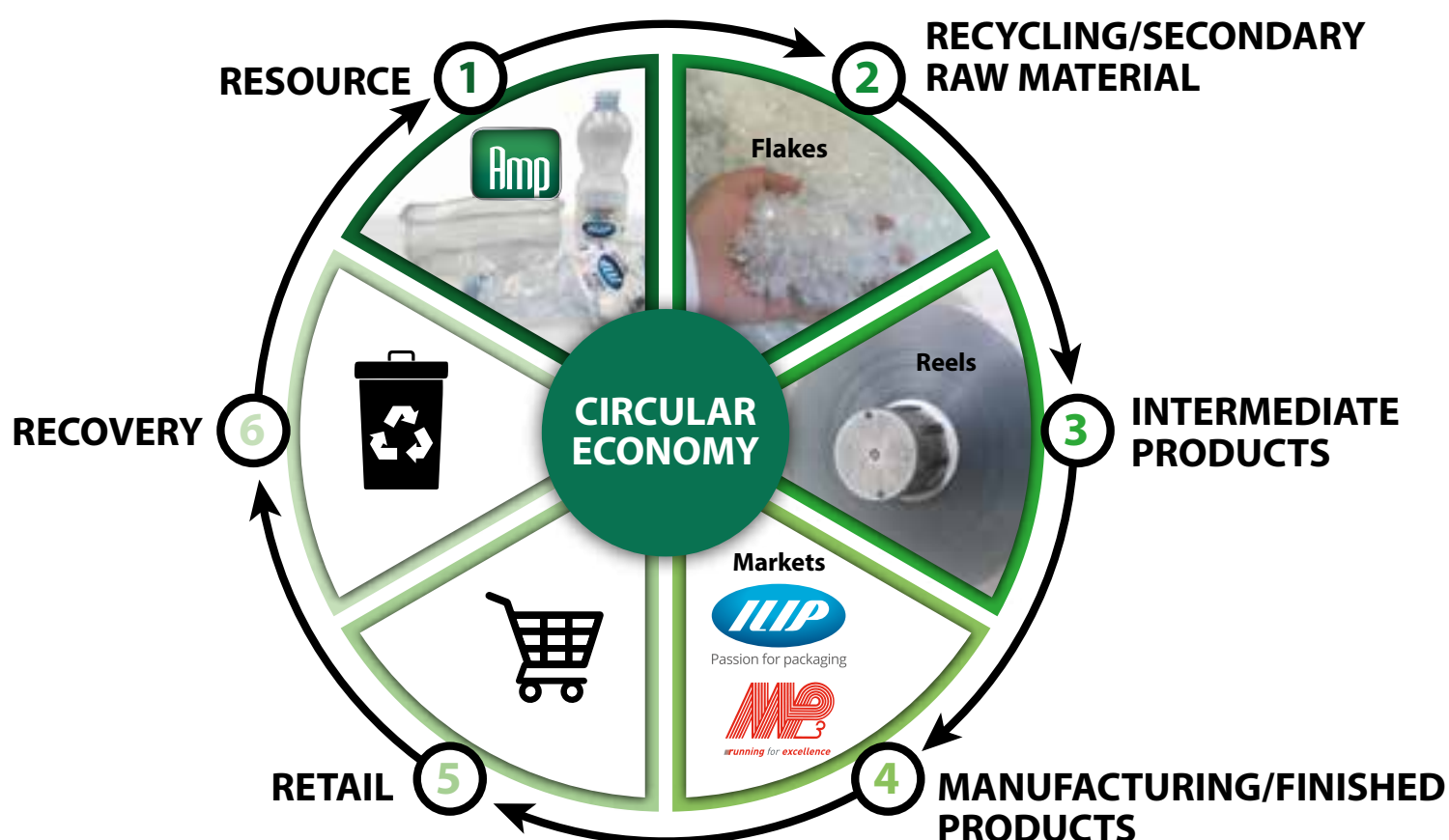
AMP S.r.l.

- PCW PET Recycling (PCR)
- R- PET films extrusion



# Sustainable development & CIRCULAR ECONOMY

I.L.P.A. Group and AMP at the forefront  
of sustainability and circular economy:  
the intra-group CLOSED LOOP



The ILPA vertical integration of r-PET:  
a closed loop that opens up to the environment.

# Sustainable development & CIRCULAR ECONOMY

## PET RECYCLING

### *CLOSING THE LOOP WITH r-PET*

ILPA Group is a concrete example of circular economy, the first European Group of companies to have vertically integrated its R-PET manufacturing process and supply chain, from postconsumer bottles to new food packaging solutions, or fibres, or non-food packaging, while ensuring the origin and traceability of the material.

**At AMP we have installed a recycling capacity of about 60.000 tons/year of post-consumer PET, which is the average quantity of PET beverage and food packaging consumed and**

**recovered in Italy in an area with about 12 mln inhabitants (Emilia-Romagna, Veneto and Tuscany). We obtain secondary raw materials, avoiding the need of a corresponding quantity of virgin PET.**

AMP and I.L.P.A. Group contribute concretely to virtuously solving the potential problem of plastic packaging waste and to the achievement of recycling targets in Italy and Europe, thus working to improve the environment of the communities in which operate.





# AMP

## WHO WE ARE

The new plant of AMP Recycling was inaugurated in 2006

The new 22,000 m<sup>2</sup> factory on a 43,000 m<sup>2</sup> lot, enabled the rationalization of all the company's production activities, by integrating its extrusion processes with a considerable plastic recycling plant dedicated to the recovery of post consumer PET bottles.

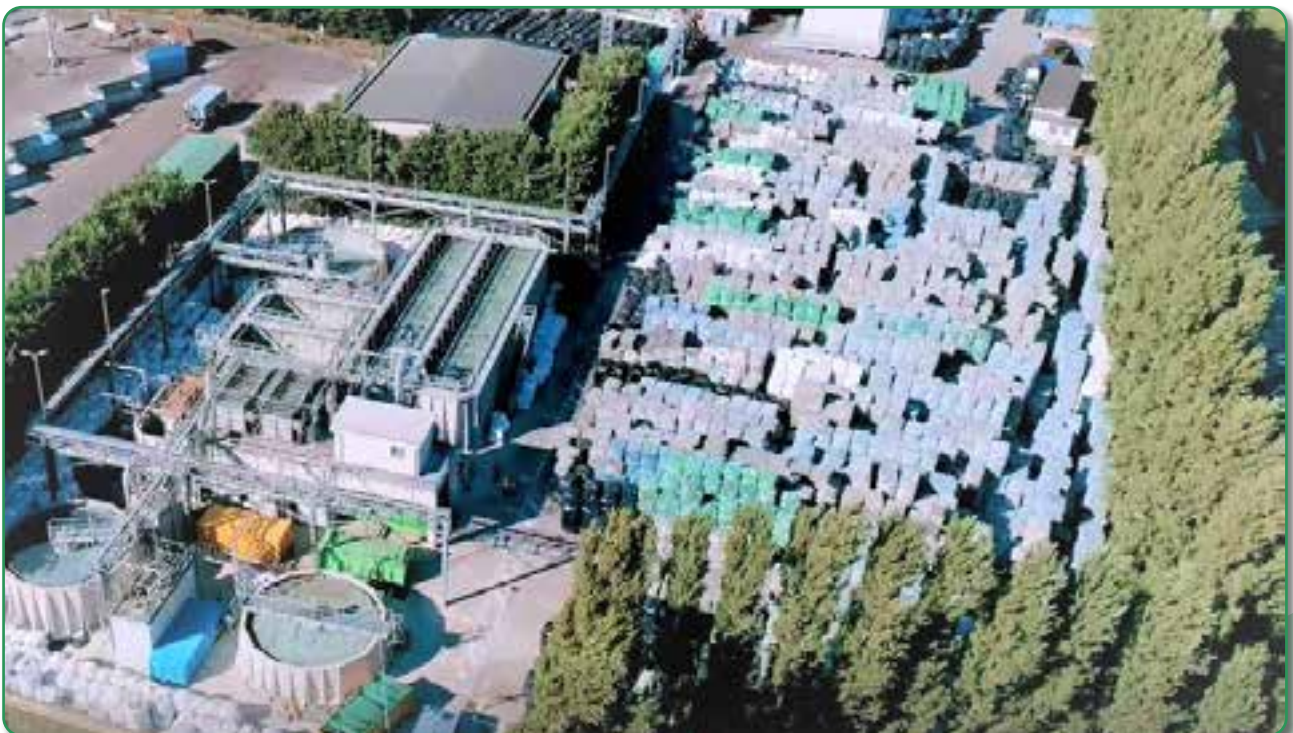
**In 2012 I.L.P.A. S.p.A. acquired the company.**

With this acquisition ILPA was the first European Group of companies to have vertically integrated its R-PET supply-chain, from postconsumer bottles to new food packaging solutions or other

end products, thus directly ensuring the origin and traceability of the material.

Since then, over 20 million Euro have been invested in order to:

- Ramp up production-recycling capacity with the installation of another state-of-the-art recycling unit
- Improve overall plant efficiency and sustainability with a new water treatment system
- Produce food-grade R-PET flakes and reels thanks to the installation of a decontamination unit which received the positive scientific opinion from EFSA



# AMP

## WHAT WE DO

The total output of the two recycling lines of AMP is 40-45.000 tons per annum.

But in the recycling business production capacity, output, is just one of the drivers to become segment leader. On top of that, quality is the critical driver that can discriminate leaders from followers.



The cutting-edge, modern, energy efficient installed equipments, include different bottles and flakes detector sets as well as laser sorting units.

AMP is a European recycling pole of excellence which converts PET bottles and trays waste into high-quality

secondary raw materials to be supplied to the ILPA Group of Companies and to selected customers Europewide.

AMP plant is certified EuCertPlast and EuCertPlast Food and we carefully source post-consumer bottles and trays bales only from selected suppliers in order to have overall quality and colour consistency in our products and to guarantee the highest safety level for our clients and for consumers.





# AMP

## THE PRODUCTION STEPS

### SORTING

- A** Metal separation: ferrous and not ferrous
- B** Aeraulic separation for film
- C** Label remover
- D** Ballistic separation
- E** Polymers and colours detection (with laser sorting)
- F** Manual re-sorting

**A**



**E**



## WASHING

**G** Grinders

**H** Hot washing

**I** Swim-sink procedure

**J** Drying

**K** Mixing silos

**L** De-dusting

**M** Coarse-grit separation

**N** Flakes sorting: metals;  
polymers; colours



# AMP

## THE PRODUCTION STEPS

### PACKING EXTRUSION

**O** Flakes packaging

**P** Flakes extrusion

**O**



**P**



# AMP

## *THE ADDED VALUE*

- ✓ Qualification of suppliers
- ✓ Control of the feedstock supply
- ✓ Constant quality checks and internal lab tests
- ✓ Quality of the input stream
- ✓ Control of the contaminant
- ✓ Continuity and consistency of supply
- ✓ High quality R-PET flakes and pellets
- ✓ Recyclclass (General level 2, Module A1-Food Contact Pre-Processing (level 2), Module A2-Food contact decontamination (level 2)) certification code RP557-AMP-01-26-CSI-MT
- ✓ Control over the “superclean process” for direct food contact: EFSA approved 100% R-PET





# AMP PRODUCTS

## R-PET FLAKES FROM BOTTLES

- Light-blue Food grade for direct food contact
- Light blue\*
- Mixed clear/light-blue\*
- Clear\*
- Mixed colors\*
- Green\*
- White\*



## R-PET FLAKES FROM TRAY

- T2T R-PET®



## R-PET PELLET FOOD GRADE

- Light blue
- Clear



## REELS

With our state-of-the-art extrusion lines we can produce reels according to customer needs and technical specifications with different content of R-PET.



\* available food compliance grade suitable for decontamination

# AMP APPLICATIONS

- R-PET food grade flakes and reels for food packaging
- R-PET A-B-A reels for food packaging
- T2T R-PET flakes from trays recycling for A-B-A reels for food packaging
- R-PET flakes and reels for non-food packaging
- Fibres
- R-PET for strapping bands
- R-PET for compounding
- R-PET for insulation



# AMP

## QUALITY AND CERTIFICATIONS

AMP guarantees the highest and strictest quality standards in compliance to the EU legislation and specifically to Reg. (EC) N.1616/2022 and also holds the **Recyclclass (General level 2, Module A1-Food Contact Pre-Processing (level 2), Module A2-Food contact decontamination (level 2)) certification code RP557-AMP-01-26-CSI-MT**, based on the European Standard EN 15343:2007 which specifies the procedures needed for the traceability of recycled plastics, that aims to recognize recyclers operating according to high standards and implementing best recycling and trading practices in order also to allow recyclers to fulfill REACH requirements and food contact compliance.

AMP is also certified according to **ISO 9001:2015 (Quality Management System Standard)**, **ISO 14001:2015 (Environmental Management System standard)** and **ISO 22000:2018 (Food Safety Management Systems)** and holds the Authorization from Emilia-Romagna Region (A.U.A.: Authorization for Plastic Materials Processing).

AMP holds an Authorization number **(RAN: ITH-7V3-1A2)** from the European commission on the safety assessment of the process "ILPA", based on Starlinger Decon technology and can produce food grade R-PET flakes and pellets for direct food contact.



AMP Recycling

# *Thank you*



a business of  **ilpa**  
group

**AMP Recycling S.r.l.**

Via Giovanni Finati, 11 - 44124 Ferrara (FE) – Italy

Tel: +39 0532 733411 - Fax: +39 0532 733444

[www.ilpa-amp.it](http://www.ilpa-amp.it) - E-mail: [info@ilpa-amp.it](mailto:info@ilpa-amp.it)